

Prepare data

The dataset should include name_s, label_s, link_s, color_s, name_t, label_t, link_t, color_t, value

A	B	C	D	E	F	G	H	I
name_s	label_s	link_s	color_s	name_t	label_t	link_t	color_t	value
ALL	ALL (0d)	0	blue	Death 182	Death (0-182d)	1	red	247
ALL	ALL (0d)	0	blue	Alive SNF 182	Alive SNF (0-182d)	2	orange	223
ALL	ALL (0d)	0	blue	Alive No SNF 182	Alive No SNF (0-182d)	3	green	1002
Death 182	Death (0-182d)	1	red	Death 365	Death (182-365d)	4	red	247
Alive SNF 182	Alive SNF (0-182d)	2	orange	Death 365	Death (182-365d)	4	red	35
Alive SNF 182	Alive SNF (0-182d)	2	orange	Alive SNF 365	Alive SNF (182-365d)	5	orange	55
Alive SNF 182	Alive SNF (0-182d)	2	orange	Alive No SNF 365	Alive No SNF (182-365d)	6	green	133
Alive No SNF 182	Alive No SNF (0-182d)	3	green	Death 365	Death (182-365d)	4	red	48
Alive No SNF 182	Alive No SNF (0-182d)	3	green	Alive SNF 365	Alive SNF (182-365d)	5	orange	48
Alive No SNF 182	Alive No SNF (0-182d)	3	green	Alive No SNF 365	Alive No SNF (182-365d)	6	green	906

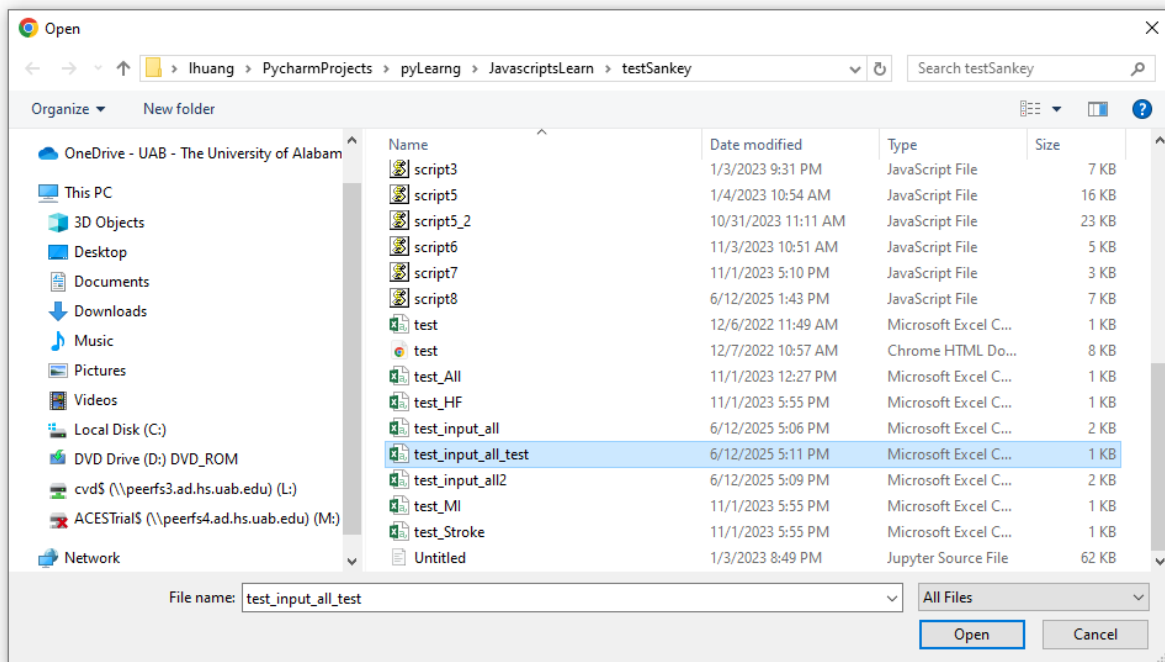
Select file

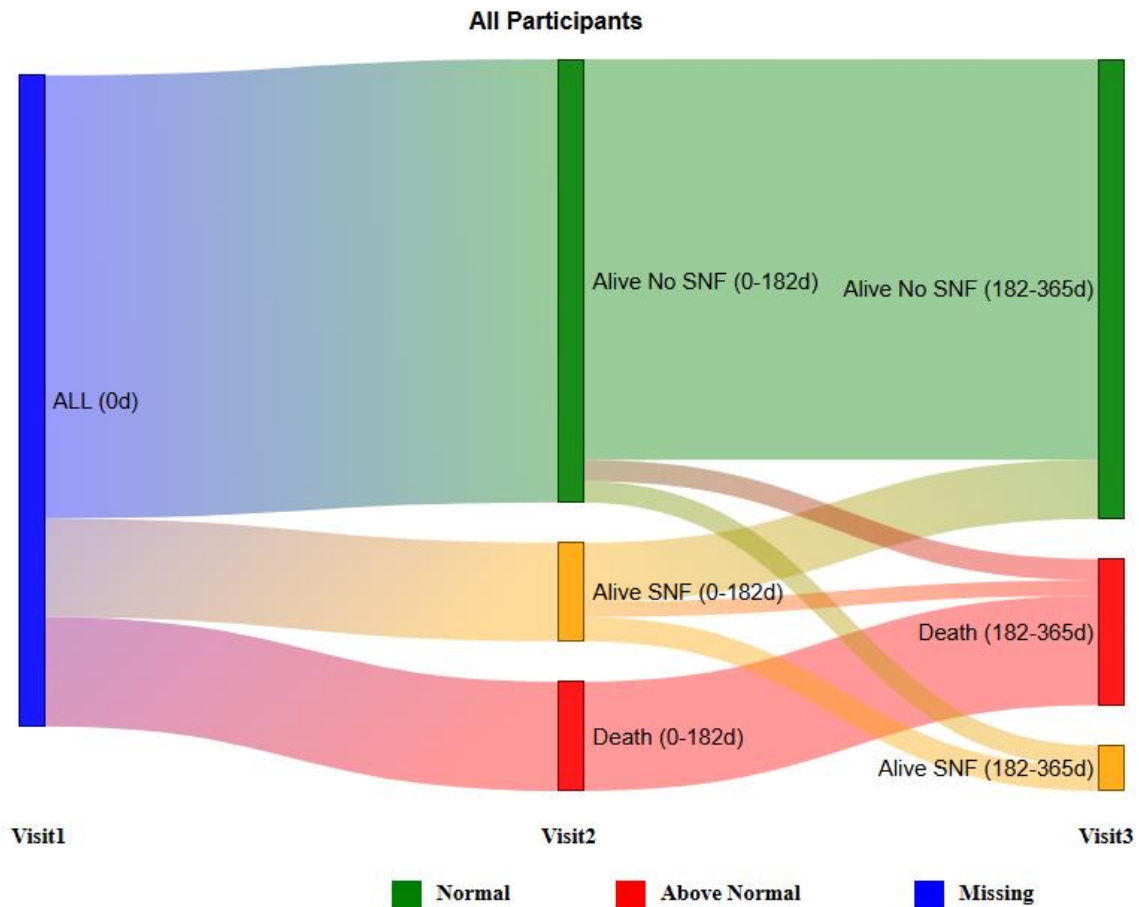
Please choose your file:

Choose File No file chosen

Example csv file

Tutorial





Change nodes position

Each nodes were labeled as below:

0-ALL, 1-Death(0-182d), 2- Alive SNF (0-182d), 3- Alive No SNF (0-182d),4- Death (182-365d), 5-Alive SNF (182-365d),6- Alive No SNF (182-365d)

You can use mouse to move their position, or you can change node_x, or node_y to move them.

F	G	H	I	J	K	L	M
label_t	link_t	color_t	value	node_id	node_x	node_y	title
death (0-182d)	1	red	247	1		0	All Participants
live SNF (0-182d)	2	orange	223	2		100	
live No SNF (0-182d)	3	green	1002	3		200	
death (182-365d)	4	red	247	4		0	
death (182-365d)	4	red	35	5		120	
live SNF (182-365d)	5	orange	55	6		180	
live No SNF (182-365d)	6	green	133				
death (182-365d)	4	red	48				
live SNF (182-365d)	5	orange	48				
live No SNF (182-365d)	6	green	906				

