

Prepare Data

Prepare and input data as the file below, save it as .csv file in your own folder (Please do not change the name of each column, and do not use comma in any cells)

Must-to-have variables in csv file:

description	effect	low	high	overrideLabel0
-------------	--------	-----	------	----------------

Variables to be added according to request

descriptionOffset	descriptionWeight	overrideLabel0Weight	overrideLabel1	overrideLabel1Weight	pVPos	refLinePos	refLinePos2	title	xlabel
-------------------	-------------------	----------------------	----------------	----------------------	-------	------------	-------------	-------	--------

description	descriptionOffset	descriptionWeight	effect	low	high	overrideLabel0	overrideLabel0Weight	overrideLabel1	overrideLabel1Weight	pVPos	refLinePos	refLinePos2	title	xlabel
Overall		bold	0.017033339	-0.022276395	0.06069784	1.04 (0.95-1.15)					0	99999	Hazard ratios (b	
Age comma years		bold	99999	99999	99999								1SD higher log-	
<55	1		0.004321374	-0.149186408	0.133538908	1.01 (0.76-1.36)								
55 to <65	1		0.033423755	-0.031517051	0.096910013	1.08 (0.93-1.25)				p-trend: 0.582				
>=65	1		0	-0.060480747	0.064457989	1.00 (0.87-1.16)								
Sex		bold	99999	99999	99999									
Female	1		0.045322979	-0.031517051	0.117271296	1.11 (0.93-1.31)				p-trend: 0.451	6			
Male	1		0.008600172	-0.040958608	0.06069784	1.02 (0.91-1.15)								
Race/ethnicity		bold	99999	99999	99999									
White	1		0.056904851	0	0.117271296	1.14 (1.00-1.31)								
Black	1		-0.008773914	-0.075720714	0.06069784	0.98 (0.84-1.15)				p-trend: 0.067				
Other	1		-0.080921908	-0.200659451	0.037476498	0.83 (0.63-1.09)								

Note: for missing numeric data, set as 99999, otherwise the app will treat it as 0;

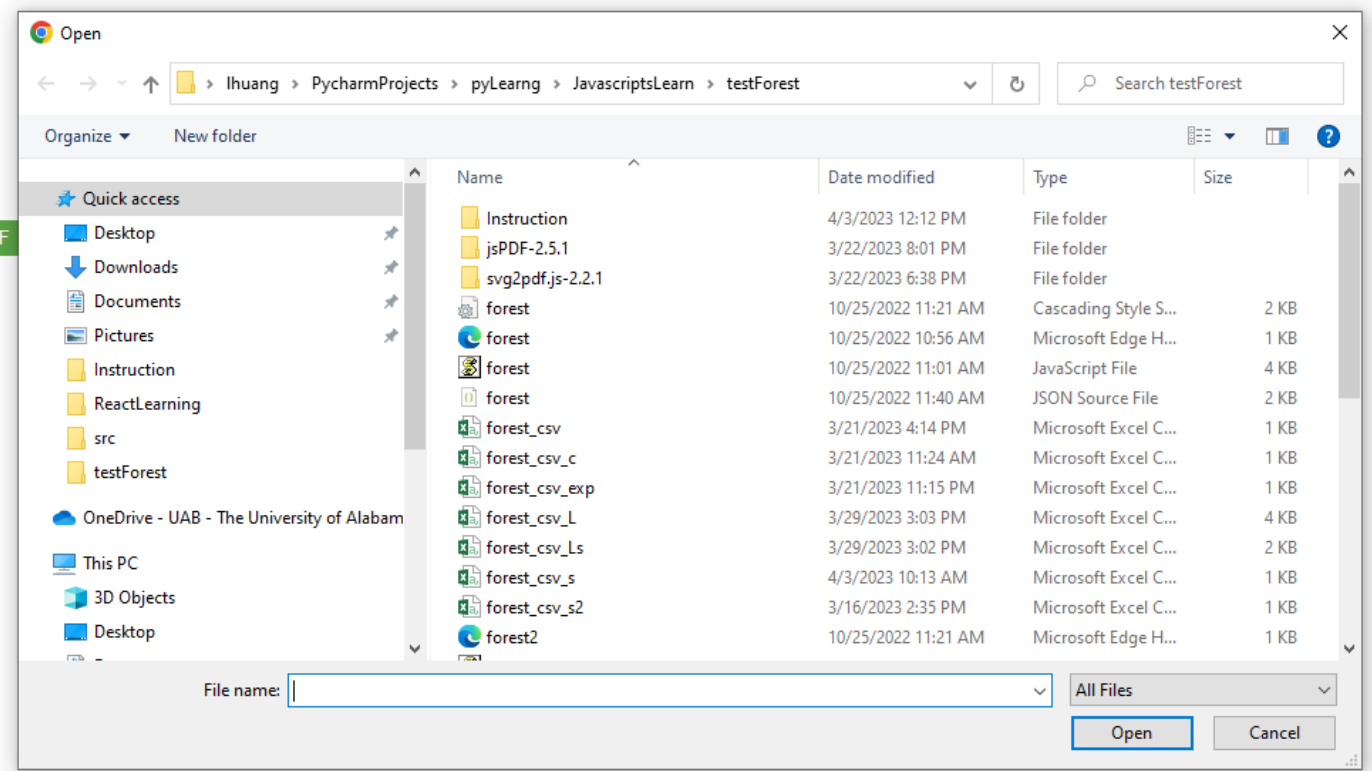
Open the app and select your csv file

Please choose your file:
 No file chosen

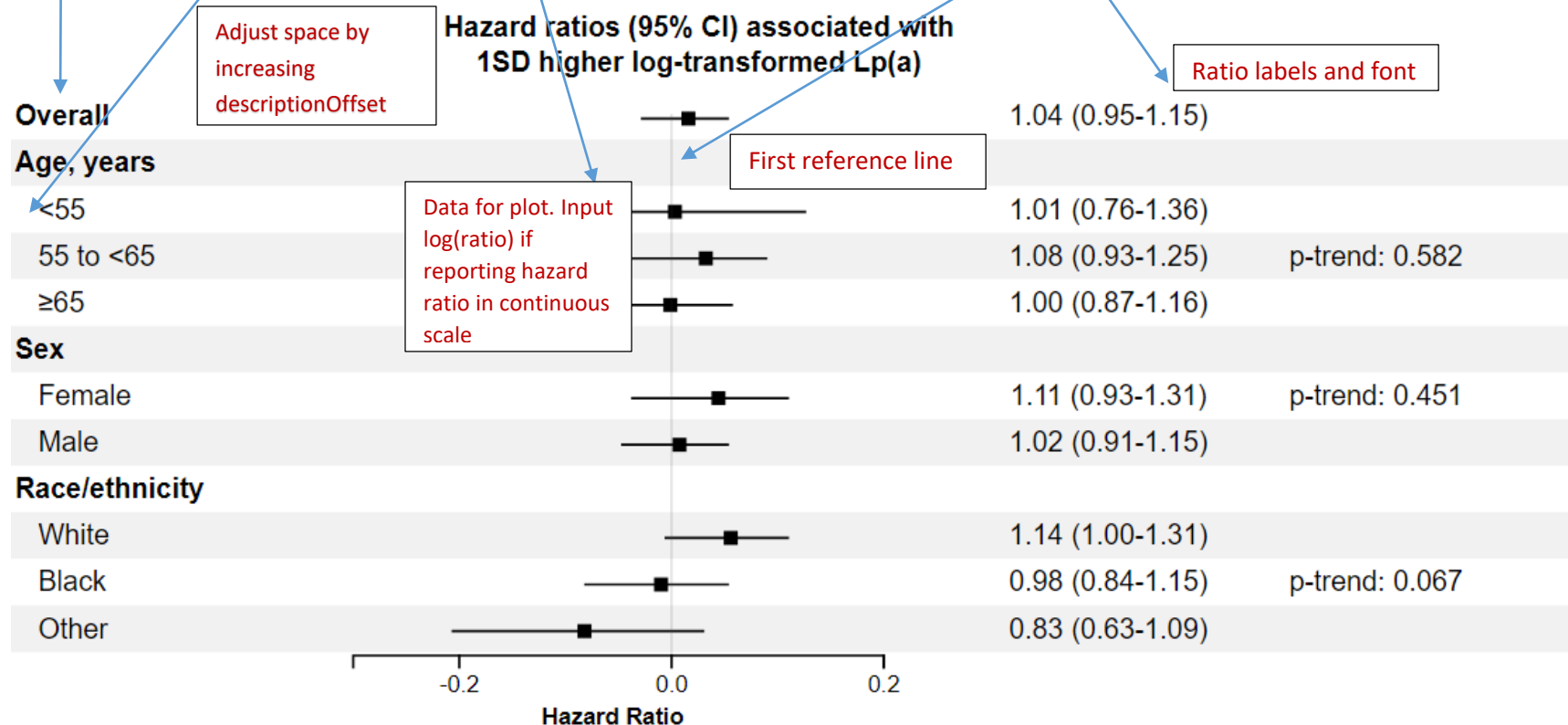
Axis Range:
Min Range
Max Range
Ticks Number

[Download PNG](#)

[Download PDF](#)







description	descriptionOffset	descriptionWeight	effect	low	high	overrideLabel0	overrideLabel0Weight	overrideLabel1	overrideLabel1Weight	pvPos	refLinePos	refLinePos	title	xlabel
Overall		bold	0.017033339	-0.022276395	0.06069784	1.04 (0.95-1.15)						0	99999	Hazard ratios (p
Age comma years		bold	99999	99999	99999									1SD higher log-
<55	1		0.004321374	-0.119186408	0.133538908	1.01 (0.76-1.36)								
55 to <65	1		0.033423755	-0.031517051	0.096910013	1.08 (0.93-1.25)				p-trend: 0.582				
≥65	1		0	-0.060480747	0.064457989	1.00 (0.87-1.16)								
Sex		bold	99999	99999	99999									
Female	1		0.045322979	-0.031517051	0.117271296	1.11 (0.93-1.31)				p-trend: 0.451	6			
Male	1		0.008600172	-0.040958608	0.06069784	1.02 (0.91-1.15)								
Race/ethnicity		bold	99999	99999	99999									
White	1		0.056904851	0	0.117271296	1.14 (1.00-1.31)								
Black	1		-0.008773924	-0.075720714	0.06069784	0.98 (0.84-1.15)				p-trend: 0.067				
Other	1		-0.080921908	-0.200659451	0.037426498	0.83 (0.63-1.09)								



Change font

overrideLabel0	overrideLabel0Weight	overrideLabel1	overrideLabel1Weight
1.04 (0.95-1.15)	bold		
1.01 (0.76-1.36)			
1.08 (0.93-1.25)		p-trend: 0.582	bold

Hazard ratios (95% CI) associated with
1SD higher log-transformed Lp(a)

Overall		1.04 (0.95-1.15)	
Age, years			
<55		1.01 (0.76-1.36)	
55 to <65		1.08 (0.93-1.25)	p-trend: 0.582
≥65		1.00 (0.87-1.16)	

Report *P* value

if you want to report p-value and adjust the label position, add “pvPos” column in your file to change the position of p-value, and then click “*Format p value*” to “Yes”; The App will adjust the label to Italic. Leave “pvPos” blank if you do not want to change its position

overrideLabel0	overrideLabel0Weight	overrideLabel1	overrideLabel1Weight	pvPos
L.04 (0.95-1.15)				
L.01 (0.76-1.36)				
L.08 (0.93-1.25)		p-trend: 0.582		
L.00 (0.87-1.16)				
L.98 (0.87-1.10)		p-trend: 0.062		6
L.18 (1.00-1.39)				
L.14 (1.00-1.31)				
L.98 (0.84-1.15)		p-trend: 0.067		
L.83 (0.63-1.09)				

Leave “pvPos” blank if you do not want to change its position

Please choose your file:

forest_csv_Ls.csv

Axis Range:

Min Range

Max Range

Ticks Number

Position:

Discriptions

Plot

Ratios

Title

Background

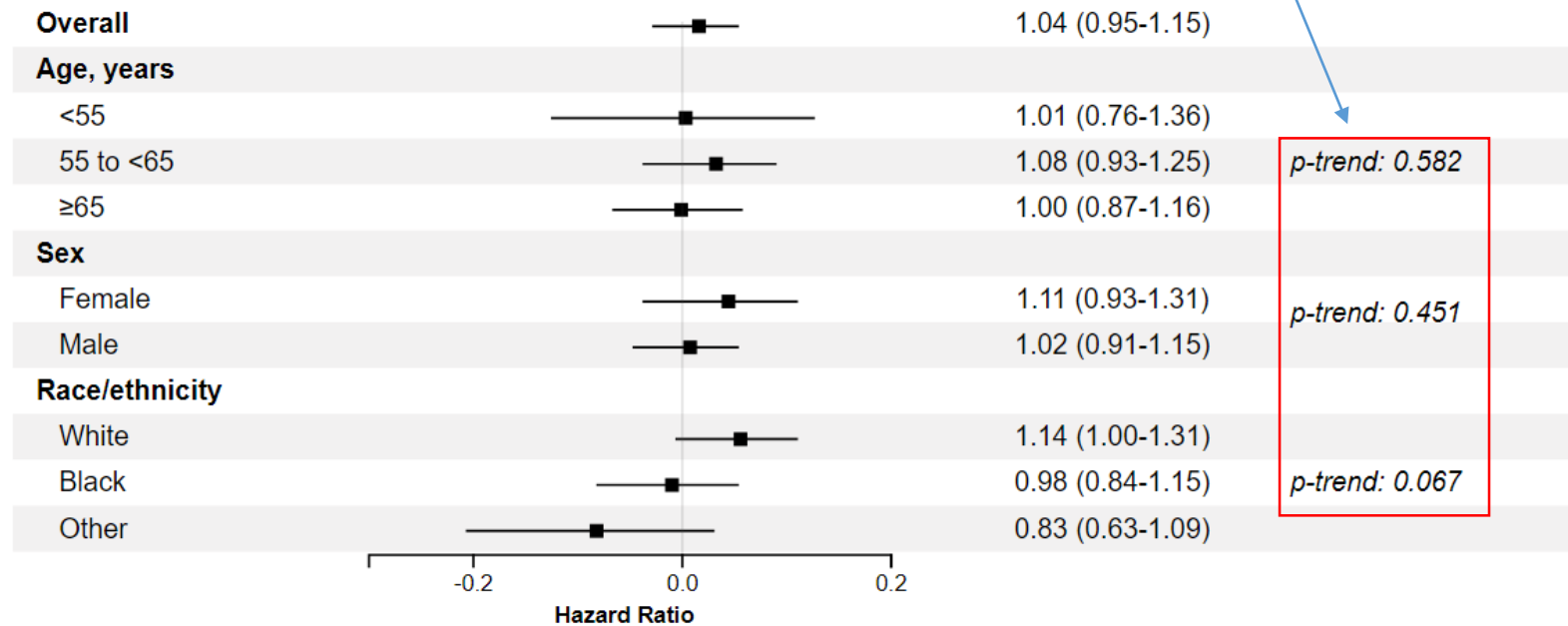
Plot Background

X Format Change

Format p value

Change Symbols

Hazard ratios (95% CI) associated with 1SD higher log-transformed Lp(a)



Change X Axis Range and Change X Axis label to Hazard Ratio

You can change the Axis range and ticks number. You report exponentiated X Axis estimates by selecting options in “**X Format Change**”.

Axis Range:
Min Range
Max Range
Ticks Number

Position:
Discriptions
Plot
Ratios
Title

Background
Plot Background
X Format Change

Format p value
Change Symbols

Download PNG

Download PDF

Hazard ratios (95% CI) associated with 1SD higher log-transformed Lp(a)

Factor	Hazard Ratio (95% CI)	p-trend
Overall	1.04 (0.95-1.15)	
Age, years		
<55	1.01 (0.76-1.36)	
55 to <65	1.08 (0.93-1.25)	p-trend: 0.582
≥65	1.00 (0.87-1.16)	
eGFR, ml/min/1.73 m²		
<45	0.98 (0.87-1.10)	p-trend: 0.062
≥45	1.18 (1.00-1.39)	
Race/ethnicity		
White	1.14 (1.00-1.31)	
Black	0.98 (0.84-1.15)	p-trend: 0.067
Other	0.83 (0.63-1.09)	

Change description and plot position

You can use mouse or key to drag the panels of “**Position**” to adjust the position of plots

Axis Range:

Min Range

Max Range

Ticks Number

Position:

Discriptions

Plot

Ratios

Title

Background

Format p value

Plot Background

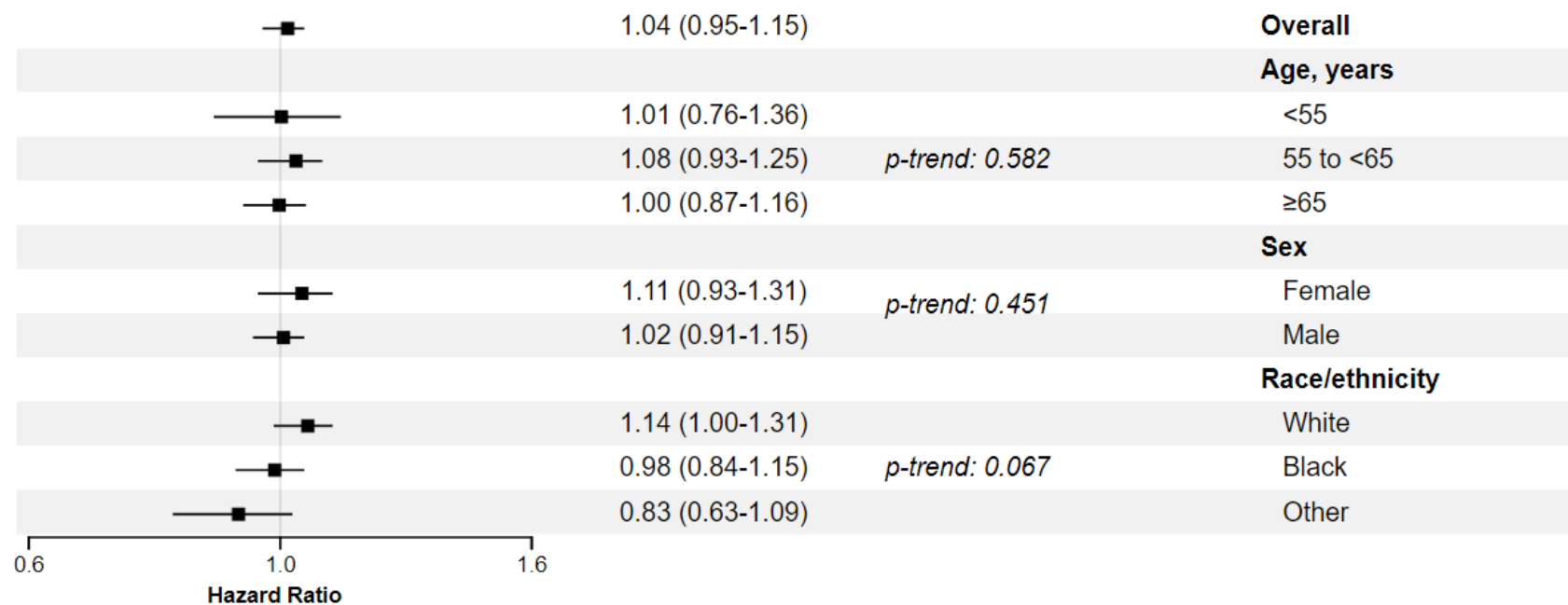
Change Symbols

X Format Change

[Download PNG](#)

[Download PDF](#)

Hazard ratios (95% CI) associated with
1SD higher log-transformed Lp(a)



Change plot background

Axis Range:

Min Range

Max Range

Picks Number

Position:

Discriptions

Plot

Ratios

Title

Background

Plot Background

X Format Change

Format p value

Change Symbols

Download PNG

Download PDF

Hazard ratios (95% CI) associated with 1SD higher log-transformed Lp(a)

Overall

Age, years

<55

55 to <65

≥65

Sex

Female

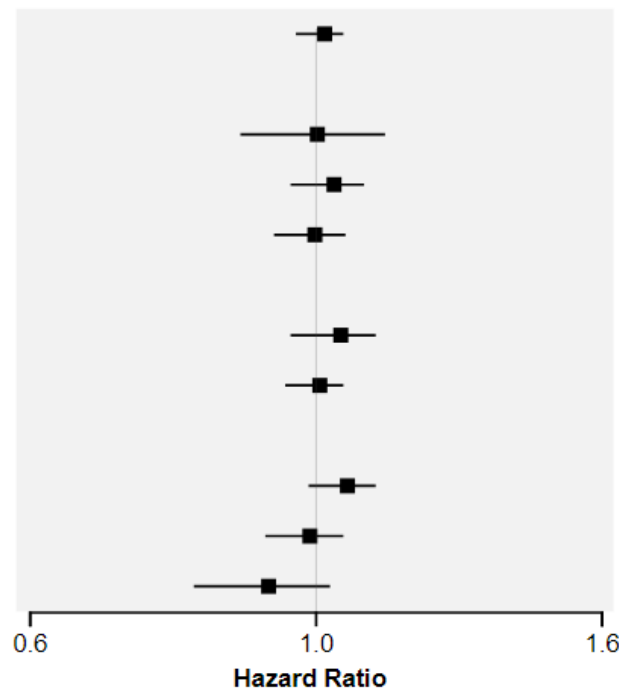
Male

Race/ethnicity

White

Black

Other



1.04 (0.95-1.15)

1.01 (0.76-1.36)

1.08 (0.93-1.25)

1.00 (0.87-1.16)

1.11 (0.93-1.31)

1.02 (0.91-1.15)

1.14 (1.00-1.31)

0.98 (0.84-1.15)

0.83 (0.63-1.09)

p-trend: 0.582

p-trend: 0.451

p-trend: 0.067

Change symbols of plots

If you want to change the size and shape of the symbols in the plot, add "symbolsize", "symboltype", "symbolcolor" in your file. And then click **"Change Symbols"**.

The default symbol size is 3. The default color is black.

s=square, c=circle, d=diamond, t=triangle, l=short line

overrideLabel0	overrideLabel0Weight	overrideLabel1	overrideLabel1Weight	refLinePos	refLinePos2	title	xlabel	symbolsize	symboltype	symbolcolor
0.92 (0.88 - 0.95)		0.92 (0.88 - 0.95)		1	99999	Forest Plot RR		3	s	black
						An example				
0.89 (0.84 - 0.94)		0.89 (0.84 - 0.94)						4	c	orange
0.93 (0.88 - 0.98)		0.93 (0.88 - 0.98)						6	d	blue
0.97 (0.91 - 1.03)		0.97 (0.91 - 1.03)						4	t	green
Reference		Second Ref						3	s	black

Axis Range:

Min Range0.8

Max Range1.090

Ticks Number?

Position:

Discriptions

Plot

Ratios

Title

BackgroundYes

Plot BackgroundNo

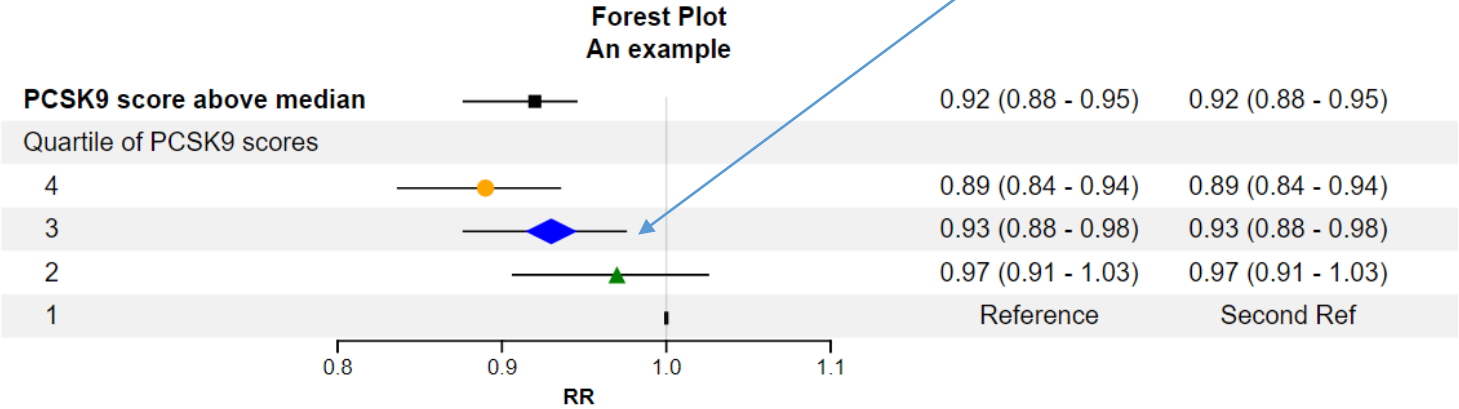
X Format ChangeOne Decimal

Format p valueNo

Change SymbolsYes

Download PNG

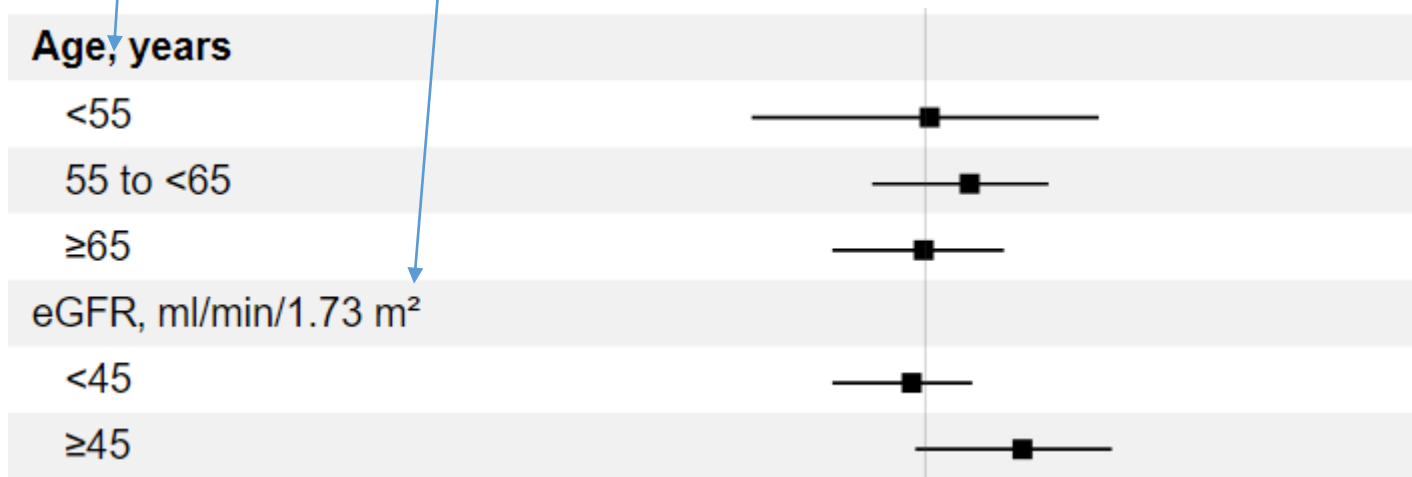
Download PDF



Special Match Character

You need use **escape(chr)** within `|` to represent special match character

description	descriptionOffset	descriptionWeight
Overall		bold
Age <code>%u201A</code> years		bold
<55	1	
55 to <65	1	
>=65	1	
eGFR <code>%u201A</code> ml/min/1.73 m ² <code>%B2</code>		
<45	1	
>=45	1	



Examples of **escape(chr)** for math characters:

±: %B1

μ: %B5

∅: %BA

More characters and their escape(chr) can be found at <http://www.javascripter.net/faq/mathsymbols.htm>.